



# HYDRAULIC THREADED CARTRIDGE VALVES

North American Regional Product Selection Guide

*HVS Guide MSG15-4000*





## **WARNING - USER RESPONSIBILITY**

**FAILURE OR IMPROPER SELECTION OR IMPROPER USE OF THE PRODUCTS DESCRIBED HEREIN OR RELATED ITEMS CAN CAUSE DEATH, PERSONAL INJURY AND PROPERTY DAMAGE.**

This document and other information from Parker-Hannifin Corporation, its subsidiaries and authorized distributors provide product or system options for further investigation by users having technical expertise.

The user, through its own analysis and testing, is solely responsible for making the final selection of the system and components and assuring that all performance, endurance, maintenance, safety and warning requirements of the application are met. The user must analyze all aspects of the application, follow applicable industry standards, and follow the information concerning the product in the current product catalog and in any other materials provided from Parker or its subsidiaries or authorized distributors.

To the extent that Parker or its subsidiaries or authorized distributors provide component or system options based upon data or specifications provided by the user, the user is responsible for determining that such data and specifications are suitable and sufficient for all applications and reasonably foreseeable uses of the components or systems.

## **OFFER OF SALE**

The items described in this document are hereby offered for sale by Parker-Hannifin Corporation, its subsidiaries or its authorized distributor. This offer and its acceptance are governed by the provisions stated in the detailed "Offer of Sale" Available from your local Parker representative.

<b>Check Valves</b>	
• <i>Insert Type, Ball Type and Poppet Type</i> .....	1-2
• <i>Pilot Operated and Dual Pilot Piston</i> .....	3-4
<b>Shuttle Valves</b>	
• <i>Insert Type and Cartridge Type (Ball)</i> .....	5
• <i>In-Line and Cartridge Type (Spool)</i> .....	6
<b>Load &amp; Motor Control Valves</b>	
• <i>Standard Pilot Assist</i> .....	7-8
• <i>Independent of Back-Pressure, Vented to Atmosphere</i> .....	9
<b>Flow Control Valves</b>	
• <i>Needle Valves</i> .....	10
• <i>Pressure Compensated Flow Controls, Flow Regulators, Priority Flow</i> .....	11-12
• <i>Flow Dividers/Combiners</i> .....	13
<b>Pressure Control Valves</b>	
• <i>Relief Valves - Direct Acting, Differential Area, Pilot Operated, Crossover</i> .....	14-16
• <i>Unloading Valves</i> .....	16
• <i>Sequence Valves - Pilot Operated (Internal Pilot &amp; External Pilot), Direct Acting</i> .....	17-18
• <i>Reducing Valves - Pilot Operated</i> .....	18
• <i>Reducing/Relieving - Direct Acting and Pilot Operated</i> .....	19
<b>Logic Element Valves</b>	
• <i>Poppet Type</i> .....	20
• <i>Spool Type - Normally Closed and Normally Open</i> .....	21-25
<b>Directional Control Valves</b>	
• <i>3-way, External Pilot, Closed Transition</i> .....	26
• <i>3-way, 2-position, External Pilot and Drain, Open Transition</i> .....	26
<b>Manual Valves</b>	
• <i>Poppet Type, Pull to Open, Normally Closed</i> .....	27
• <i>Spool Type, Rotary and Directional Control</i> .....	27-28
<b>Solenoid Valves</b>	
• <i>Poppet Type, 2-way</i> .....	29-31
• <i>Spool Type (2-way, 3-way, 4-way)</i> .....	32-38
<b>Proportional Valves</b>	
• <i>Pressure Control Valves (Relieving and Reducing)</i> .....	39-40
• <i>Flow Control Valves (2-way (Poppet), 2-way, 3-way)</i> .....	41-44
• <i>Directional Control Valves</i> .....	45-46
<b>Coils</b>	
• <i>Super Coil (1/2", 5/8")</i> .....	47
• <i>Super Coil (1/2" Short - EPR083R)</i> .....	48
• <i>DS Coil (1")</i> .....	48
<b>Bodies</b>	
• <i>Standard Line Bodies (B**-*)</i> .....	49
• <i>Counterbalance Bodies (MHC-*)</i> .....	49
• <i>Special Line Bodies (LB10*)</i> .....	50
• <i>Cartpak Bodies (BD03*)</i> .....	51

If you have questions about the products contained in this catalog, or their applications, please contact:

**Hydraulic Valve Systems Division**

phone: 1-440-366-5100

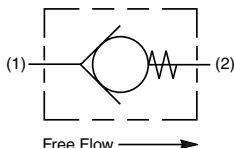
email: [HCS.Support@support.parker.com](mailto:HCS.Support@support.parker.com)

Extra care is taken in the preparation of this literature, but Parker is not responsible for any inadvertent typographical errors or omissions. Information in this catalog is only accurate as of the date of publication. For a more current information base, please consult the division web site at [www.parker.com/hvs](http://www.parker.com/hvs)

# Check Valves

## INSERT TYPE (CVH021 series)

(For more information, see details page [linked here](#))


**CVH**

Check  
Valve

**021**

Size

Size	
Code	Size
021	1 GPM, 5000 PSI

**Highlight** represents Global Core product. More detailed information is available in the Global Core Catalog, MSG15-3504, available online at [www.parker.com/hvs/resources](http://www.parker.com/hvs/resources)

## INSERT TYPE (D1\* series)

(For more information, see details page [linked here](#))


**D1**

Check  
Valve



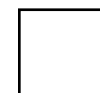
Insert  
Type



Size



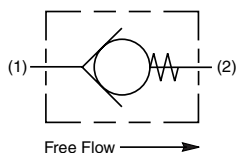
-



Crack  
Pressure



Seal  
(Nitrile)

**D1A060**
**D1B125**


Insert Type	
Code	Type
A	Ball
B	Poppet

Size	
Code	Cavity
060 <sup>1</sup>	2U (38 GPM, 6000 PSI)
125 <sup>2</sup>	2C (132 GPM, 6000 PSI)

1 - Insert Type "A" only  
2 - Insert Type "B" only

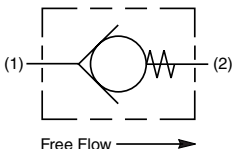
Crack Pressure	
Code	Pressure
0.2	3 PSI
1.0 <sup>1</sup>	15 PSI
5.0 <sup>1</sup>	72 PSI

1 - Size "125" only

**Highlight** represents Global Core product. More detailed information is available in the Global Core Catalog, MSG15-3504, available online at [www.parker.com/hvs/resources](http://www.parker.com/hvs/resources)

## BALL TYPE (D0 series)

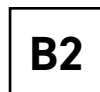
(For more information, see details page [linked here](#))


**D0**

Check  
Valve



Size


**B2**

Ball  
Type



-



Crack  
Pressure



Seal  
(Nitrile)

Size	
Code	Cavity
2	C08-2 (21 GPM, 6000 PSI)
4	C10-2 (42 GPM, 6000 PSI)

Crack Pressure	
Code	Pressure
0.2	3 PSI
1.0 <sup>1</sup>	15 PSI
2.1	30 PSI
3.4 <sup>1</sup>	50 PSI
6.0 <sup>1</sup>	87 PSI

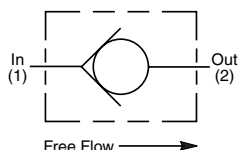
1 - Size "2" only

**Highlight** represents Global Core product. More detailed information is available in the Global Core Catalog, MSG15-3504, available online at [www.parker.com/hvs/resources](http://www.parker.com/hvs/resources)

# Check Valves

## POPPET TYPE (CVH series)

(For more information, see details page [linked here](#))



**Highlight** represents Global Core product. More detailed information is available in the Global Core Catalog, MSG15-3504, available online at [www.parker.com/hvs/resources](http://www.parker.com/hvs/resources)

**CVH**

Check Valve



Size

**P**

Poppet Type



Crack Pressure



Seal

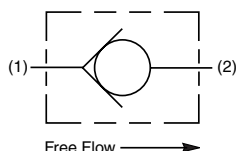
Size	
Code	Cavity
081	C08-2 (10 GPM, 5000 PSI)
103	C10-2 (16 GPM, 5000 PSI)
121	C12-2 (32 GPM, 5000 PSI)
161	C16-2 (60 GPM, 5000 PSI)
201	C20-2 (80 GPM, 5000 PSI)

Seal	
Code	Material
Omit <sup>1</sup>	"D"-Ring, Nitrile
N <sup>2</sup>	Nitrile
V	Fluorocarbon
1 - Size 081, 103 - "D"-Ring Size 121, 161, 201 - Nitrile 2 - Size 081, 103 only	
<b>"D"-Ring for C08 and C10 cavity sizes only!</b>	

Crack Pressure		
Size	Code	Crack Pressure
081	Omit	5 PSI
	10	10 PSI
	30	30 PSI
	65	65 PSI
	100	100 PSI
	150	150 PSI
103	Omit	5 PSI
	20	20 PSI
	50	50 PSI
	65	65 PSI
	80	80 PSI
	100	100 PSI
121	Omit	25 PSI
	65	65 PSI
161	Omit	5 PSI
	20	20 PSI
	65	65 PSI
	125	125 PSI
	175	175 PSI
201	Omit	5 PSI
	20	20 PSI
	65	65 PSI

## POPPET TYPE (D06B2P series)

(For more information, see details page [linked here](#))



**D0**

Check Valve

**6**

Size

**B2P**

Poppet Type

**0.1**

Crack Pressure

**N**

Seal (Nitrile)

Size	
Code	Cavity
6	C16-2 (132 GPM, 6000 PSI)

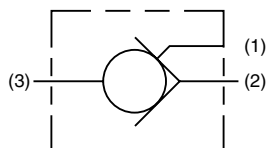
Crack Pressure	
Code	Pressure
0.1	1.5 PSI

**Highlight** represents Global Core product. More detailed information is available in the Global Core Catalog, MSG15-3504, available online at [www.parker.com/hvs/resources](http://www.parker.com/hvs/resources)

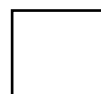
# Check Valves

## PILOT OPERATED (*CP series*)

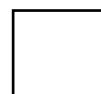
(For more information, see details page [linked here](#))



P.O.  
Check  
Valve



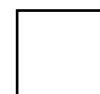
Pressure



Size



Poppet  
Type



Crack  
Pressure



Seal

Pressure	
Code	Rating
Omit <sup>1</sup>	3000 PSI
H <sup>2</sup>	5000 PSI
1 - 084 size only 2 - 104 and 124 size only	

Size	
Code	Cavity
084	C08-3 (5 GPM)
104	C10-3 (8 GPM)
124	C12-3 (20 GPM)

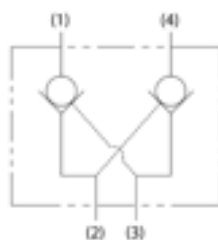
Crack Pressure		
Size	Code	Crack Pressure
084	Omit	25 PSI
	85	85 PSI
104	15	15 PSI
	Omit	20 PSI
	50	50 PSI
124	Omit	25 PSI

Seal	
Code	Material
Omit <sup>1</sup>	"D"-Ring, Nitrile
N <sup>2</sup>	Nitrile
V	Fluorocarbon
1 - Size 084, 124 - Nitrile Size 104 - "D"-Ring 2 - Size 104 only	
<b>"D"-Ring for C10 cavity sizes only!</b>	

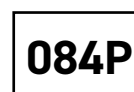
**Highlight** represents Global Core product More detailed information is available in the Global Core Catalog, MSG15-3504, available online at [www.parker.com/hvs/resources](http://www.parker.com/hvs/resources)

## DUAL PILOT OPERATED (*CPD series*)

(For more information, see details page [linked here](#))



Cartridge  
Dual  
P.O. Check



Size



Seal

Size	
Code	Cavity
084P	C10-2 (16 GPM, 5000 PSI)

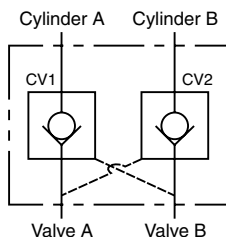
Seal	
Code	Material
Omit	Nitrile
V	Fluorocarbon

**Highlight** represents Global Core product More detailed information is available in the Global Core Catalog, MSG15-3504, available online at [www.parker.com/hvs/resources](http://www.parker.com/hvs/resources)

# Check Valves

## DUAL PILOT PISTON (CDPH series)

(For more information, see details page [linked here](#))



**Highlight** represents Global Core product. More detailed information is available in the Global Core Catalog, MSG15-3504, available online at [www.parker.com/hvs/resources](http://www.parker.com/hvs/resources)

Crack Pressure	
Code	Pressure
Omit <sup>1</sup>	5 PSI
20	20 PSI
50	50 PSI
65	65 PSI
80	80 PSI
100	100 PSI
<sup>1</sup> - Not available with "A" piston option	

**CDPH**

Dual Pilot  
Piston  
P.O. Check



Size



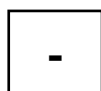
Piston  
Type



Crack  
Pressure



Seal



Port  
Size

Size	
Code	Cavity
103	C10-2 (16 GPM, 5000 PSI)

Piston Type	
Code	Type
P	Pilot Piston w/o seal
A <sup>1</sup>	Pilot Piston w/seal
<sup>1</sup> - Requires 20 PSI minimum crack pressure	

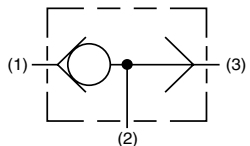
Seal	
Code	Material
Omit	"D"-Ring
N	Nitrile
V	Fluorocarbon

Port Size	
Code	Size (Material)
8T	SAE-8 (Steel)

# Shuttle Valves

## INSERT TYPE (*KSWA3 series*)

(For more information, see details page [linked here](#))



**KSWA3**

Insert Shuttle  
Valve, Ball Type

**N**

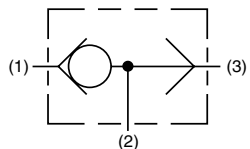
Seal  
(Nitrile)

**Highlight** represents Global Core product. More detailed information is available in the Global Core Catalog, MSG15-3504, available online at [www.parker.com/hvs/resources](http://www.parker.com/hvs/resources)

Size	
Code	Cavity
KSWA3	CAVSW-3 (2.5 GPM, 6000 PSI)

## CARTRIDGE TYPE, BALL (*CSH series*)

(For more information, see details page [linked here](#))



**CSH**

Shuttle  
Valve



Size



Seal

**Highlight** represents Global Core product. More detailed information is available in the Global Core Catalog, MSG15-3504, available online at [www.parker.com/hvs/resources](http://www.parker.com/hvs/resources)

Size	
Code	Cavity
041	C04-3 (1 GPM, 5000 PSI)
101B	C10-3 (10 GPM, 5000 PSI)

Seal	
Code	Material
Omit <sup>1</sup>	"D"-Ring, Nitrile
N <sup>2</sup>	Nitrile
V	Fluorocarbon
<sup>1</sup> - Size 041 - Nitrile Size 101B - "D"-Ring <sup>2</sup> - Size 101B only	
<b>"D"-Ring for C10 cavity size only!</b>	



# Shuttle Valves

## IN-LINE (ASH series)

(For more information, see details page [linked here](#))



ASH-04



**ASH**

Check  
Valve

-

Port  
Size

-

Port  
Type

Port Size	
Code	Size
04	1/4" JIC (3 GPM, 3000 PSI)
06	SAE-6 (6 GPM, 3000 PSI)

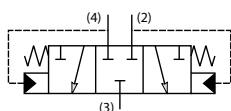
Port Type	
Code	Type
2	SAE (Size 06 only)
03	Male JIC (Size 04 only)



ASH-06

## CARTRIDGE TYPE, SPOOL (K04C3 series)

(For more information, see details page [linked here](#))



**K**

Shuttle  
Valve

**04**

Size

**C3**

3-way,  
Spring  
Center

-

**10.0**

Switch  
Pressure

**N**

Seal  
(Nitrile)

Size	
Code	Cavity
04	C10-4 (26 GPM, 6000 PSI)

Switching Pressure	
Code	Pressure
10.0	145 PSI

**Highlight** represents Global Core product. More detailed information is available in the Global Core Catalog, MSG15-3504, available online at [www.parker.com/hvs/resources](http://www.parker.com/hvs/resources)

# Load/Motor Control Valves

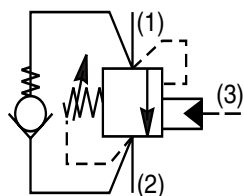
7

## STANDARD PILOT ASSISTED (*E2\*1 series*)

(For more information, see details page [linked here](#))



<b>E2</b>		<b>1</b>			
Load Control Valve	Pilot Ratio	Size	Function	Adjustment Style	Seal



Pilot Ratio	
Code	Ratio
E'	1.5:1
K	3:1
M	4.5:1

1 - Function Code Omit and S only

Size	
Code	Cavity
1	CAVT11A (16 GPM, 5000 PSI)

Adjustment Style	
Code	Style
Z	Screw Adjust
T	Tamperproof Cap

Function	
Code	Restrictive
Omit	Non-restrictive
S	Semi-restrictive
R	Restrictive

Seal	
Code	Material
N	Nitrile
V	Fluorocarbon

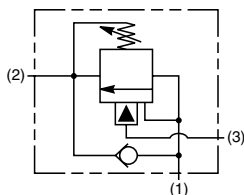
**Highlight** represents Global Core product. More detailed information is available in the Global Core Catalog, MSG15-3504, available online at [www.parker.com/hvs/resources](http://www.parker.com/hvs/resources)

## STANDARD PILOT ASSISTED (*CB101 series*)

(For more information, see details page [linked here](#))



<b>CB</b>	<b>101</b>				
Load Control Valve	Size	Pilot Ratio	Adjustment Style	Pressure Range	Seal



Size	
Code	Cavity
101	C10-3 (12 GPM, 5500 PSI)

Pressure Range	
Code	Range
10	500 to 1500 PSI
20	1000 to 2500 PSI
30	2400 to 5000 PSI

**Highlight** represents Global Core product. More detailed information is available in the Global Core Catalog, MSG15-3504, available online at [www.parker.com/hvs/resources](http://www.parker.com/hvs/resources)

Pilot Ratio	
Code	Ratio
A	3:1
B	4.5:1
C	7:1

Adjustment Style	
Code	Style
S	Screw Adjust
T	Tamperproof Cap
K	Knob

Seal	
Code	Material
Omit	Nitrile
V	Fluorocarbon

# Load/Motor Control Valves

8

## STANDARD PILOT ASSISTED (MHC series)

(For more information, see details page [linked here](#))



**MHC** -  - **S**    -

Load  
Control  
Valve

Size

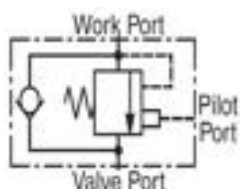
Type

Pilot  
Ratio

Adjustment  
Style

Holding  
Pressure

Seal



Size	
Code	Cavity
010	CDD-1010 (10 GPM, 5000 PSI)
022	CDD-1036 (25 GPM, 5000 PSI)

Adjustment Style	
Code	Style
S	Standard (adj.)
N	Shimmed (non-adj.)

Holding Pressure	
Code	Pressure
D <sup>1</sup>	1000 PSI
F <sup>1</sup>	2000 PSI
H	3000 PSI
K <sup>2</sup>	5000 PSI
1 - Size 010 only 2 - Pilot Ratio F or J and Adjustment N only	

**Highlight** represents Global Core product. More detailed information is available in the Global Core Catalog, MSG15-3504, available online at [www.parker.com/hvs/resources](http://www.parker.com/hvs/resources)

Type	
Code	Function
S	Standard (non-vented)

Pilot Ratio	
Code	Ratio
B <sup>1</sup>	4:1
C <sup>2</sup>	5:1
F <sup>1</sup>	7:1
J	10:1
1 - Size 010 only 2 - Size 022 only	

Seal	
Code	Material
00B	Nitrile
00F	Fluorocarbon

## STANDARD PILOT ASSISTED (E2\* series)

(For more information, see details page [linked here](#))



**E2**   **Z** **N**

Load  
Control  
Valve

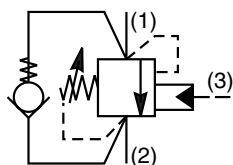
Pilot  
Ratio

Size

Adjustment  
Style

Seal  
(Nitrile)

Design  
Code



Size	
Code	Cavity
020 <sup>1</sup>	53-1 (3.7 GPM, 6000 PSI) (5.3 GPM, 6000 PSI)
040	68-1 (15.9 GPM, 5000 PSI)
060	3C (32 GPM, 5000 PSI)
125	3M (53 GPM, 5000 PSI)
300	3K (92 GPM, 5000 PSI)
1 - pilot ratio A=3.7 GPM, pilot ratio B=5.3 GPM	

Adjustment Style	
Code	Style
Z	Screw Adjust

Design Code	
Code	Range
Omit	Size 020 only
MK2	Size 060, 125, 300 only
MK3	Size 040 only

Pilot Ratio		
Size	Code	Ratio
020	A	8:1
	B	4.5:1
040	A	8:1
	B	3:1
060	A	8:1
	B	3:1
	H	1.75:1
125	A	8:1
	E	3:1
300	A	8:1
	C	3:1

**Highlight** represents Global Core product. More detailed information is available in the Global Core Catalog, MSG15-3504, available online at [www.parker.com/hvs/resources](http://www.parker.com/hvs/resources)

# Load/Motor Control Valves

9

## VENTED, PILOT ASSISTED (*MHC series*)

(For more information, see details page [linked here](#))



<b>MHC</b>	-		-	<b>V</b>				-	
------------	---	--	---	----------	--	--	--	---	--

Load  
Control  
Valve

Size

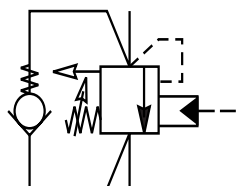
Type

Pilot  
Ratio

Adjustment  
Style

Holding  
Pressure

Seal



Size	
Code	Cavity
010	CDD-1010 (10 GPM, 5000 PSI)
022	CDD-1036 (25 GPM, 5000 PSI)

Adjustment Style	
Code	Style
S	Standard (adj.)
N	Shimmed (non-adj.)

Holding Pressure	
Code	Pressure
D <sup>1</sup>	1000 PSI
F <sup>1</sup>	2000 PSI
H	3000 PSI
K <sup>2</sup>	5000 PSI
1 - Size 010 only 2 - Pilot Ratio F or J and Adjustment N only	

Type	
Code	Function
V	Vented

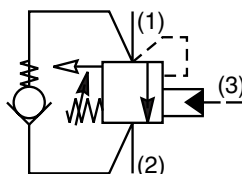
Pilot Ratio	
Code	Ratio
B <sup>1</sup>	4:1
C <sup>2</sup>	5:1
F <sup>1</sup>	7:1
J	10:1
1 - Size 010 only 2 - Size 022 only	

Seal	
Code	Material
00B	Nitrile
00F	Fluorocarbon

**Highlight** represents Global Core product. More detailed information is available in the Global Core Catalog, MSG15-3504, available online at [www.parker.com/hvs/resources](http://www.parker.com/hvs/resources)

## VENTED, PILOT ASSISTED (*E6\* series*)

(For more information, see details page [linked here](#))



<b>E6</b>				<b>Z</b>	<b>N</b>	
-----------	--	--	--	----------	----------	--

Load  
Control  
Valve

Pilot  
Ratio

Size

Adjustment  
Style

Seal  
(Nitrile)

Design  
Code

Pilot Ratio	
Code	Ratio
B <sup>1</sup>	3:1, 4.5:1
K <sup>2</sup>	15:1
1 - 4.5:1 option size 020 only 2 - size 020 only	

Size	
Code	Cavity
020	53-1 (5.3 GPM, 6000 PSI) <sup>1</sup> (5.3 GPM, 5075 PSI) <sup>2</sup>
040	68-1 (15.9 GPM, 5075 PSI)
060	3C (48 GPM, 5000 PSI)
1 - pilot ratio B 2 - pilot ratio K	

Adjustment Style	
Code	Style
Z	Screw Adjust

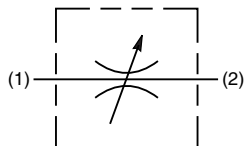
Design Code	
Code	Range
Omit	Size 020 only
MK3	Size 040 only
409	Size 060 only

**Highlight** represents Global Core product. More detailed information is available in the Global Core Catalog, MSG15-3504, available online at [www.parker.com/hvs/resources](http://www.parker.com/hvs/resources)

# Flow Control Valves

## NEEDLE VALVES (*NVH series*)

(For more information, see details page [linked here](#))



Needle  
Valve



Size



Style



Adjustment  
Style



Seal

Size	
Code	Cavity
081	C08-2 (10 GPM, 5500 PSI)
101	C10-2 (16 GPM, 5500 PSI)

Style	
Code	Style
Omit	Coarse
F	Fine

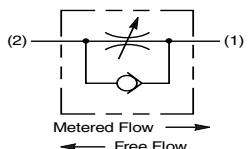
Adjustment Style	
Code	Style
K	Knob
S	Screw
T	Tamperproof

Seal	
Code	Material
Omit	"D"-Ring
N	Nitrile
V	Fluorocarbon

**Highlight** represents Global Core product. More detailed information is available in the Global Core Catalog, MSG15-3504, available online at [www.parker.com/hvs/resources](http://www.parker.com/hvs/resources)

## NEEDLE VALVES w/REVERSE CHECK (*FV series*)

(For more information, see details page [linked here](#))



Needle  
Valve



Size



Style



Adjustment  
Style



Seal

Size	
Code	Cavity
10	C10-2

Style	
Code	Style
1	Coarse (12 GPM, 3000 PSI)
2	Fine (6 GPM, 3000 PSI)

Adjustment Style	
Code	Style
K	Knob
S	Screw

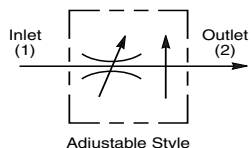
Seal	
Code	Material
Omit	Nitrile
V	Fluorocarbon

**Highlight** represents Global Core product. More detailed information is available in the Global Core Catalog, MSG15-3504, available online at [www.parker.com/hvs/resources](http://www.parker.com/hvs/resources)

# Flow Control Valves

## PRESSURE COMPENSATED (*J0 series*)

(For more information, see details page [linked here](#))



<b>J0</b>		<b>E2</b>	<b>Z</b>	<b>N</b>
Press Comp Flow Control	Size	Style	Adjustment Style	Seal (Nitrile)

Size	
Code	Cavity
2	C08-2 (5.3 GPM, 6000 PSI)
4	C10-2 (10.6 GPM, 6000 PSI)

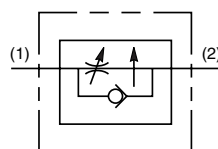
Style	
Code	Style
E2	Restrictive

Adjustment Style	
Code	Style
Z	Screw

**Highlight** represents Global Core product. More detailed information is available in the Global Core Catalog, MSG15-3504, available online at [www.parker.com/hvs/resources](http://www.parker.com/hvs/resources)

## PRESSURE COMPENSATED w/ REVERSE CHECK (*F\*101 series*)

(For more information, see details page [linked here](#))



<b>F</b>		<b>101</b>			
Press Comp Flow Control	Size	Adjustment Style	Regulated Flow Range ( <b>OMIT for A size</b> )	Seal	

Size	
Code	Cavity
A	C10-2 (5.5 GPM, 3000 PSI)
C	C10-2 (15 GPM, 3000 PSI)

Adjustment Style	
Code	Style
K	Knob
S	Screw
T	Tamperproof

Flow Range	
<b>FOR "C" SIZE ONLY!</b>	
<b>"A" SIZE range is 0-5.5 GPM.</b>	
Code	Range
050	0.3-1.0 GPM
100	0.75-2.2 GPM
300	2.0-4.5 GPM
600	4.0-8.0 GPM

Seal	
Code	Material
Omit	Nitrile
V	Fluorocarbon

**Highlight** represents Global Core product. More detailed information is available in the Global Core Catalog, MSG15-3504, available online at [www.parker.com/hvs/resources](http://www.parker.com/hvs/resources)

# Flow Control Valves

## PRESSURE COMPENSATED FLOW REGULATORS (*FR032 series*)

(For more information, see details page [linked here](#))



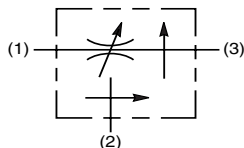
<b>FR</b>	<b>032</b>	
Pressure Compensated Flow Regulator	Size	Flow Setting

Size	
Code	Cavity
032	ES10436 (0.3 GPM, 3000 PSI)

Flow Setting	
Code	Setting
010	0.1 GPM
020	0.2 GPM
030	0.3 GPM

## PRESSURE COMPENSATED PRIORITY FLOW (*J\* series*)

(For more information, see details page [linked here](#))



<b>J</b>		<b>Z</b>	<b>N</b>
Press Comp Flow Control	Size	Adjustment Style	Seal (Nitrile)

Size	
Code	Cavity
02D3	C08-3 (4 GPM, 6000 PSI)
04D3	C10-3 (18 GPM, 6000 PSI) <sup>1</sup>
1A125	3A (40 GPM, 5000 PSI) <sup>2</sup>
<sup>1</sup> - Max priority flow 12 GPM <sup>2</sup> - Max priority flow 24 GPM	

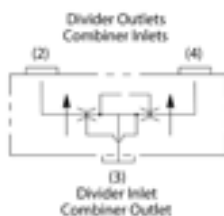
Adjustment Style	
Code	Style
Z	Screw

**Highlight** represents Global Core product. More detailed information is available in the Global Core Catalog, MSG15-3504, available online at [www.parker.com/hvs/resources](http://www.parker.com/hvs/resources)

# Flow Control Valves

## FLOW DIVIDER/COMBINERS (*L0 series*)

(For more information, see details page [linked here](#))


**L0**

Flow  
Divider/  
Combiner

Size

Flow  
Division

**N**

Seal  
(Nitrile)

Size	
Code	Cavity
4A3	C10-4 (16 GPM, 6000 PSI)
6A3	C16-4 (47 GPM, 6000 PSI)

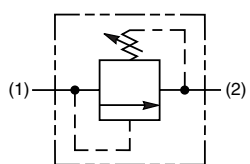
**Highlight** represents Global Core product. More detailed information is available in the Global Core Catalog, MSG15-3504, available online at [www.parker.com/hvs/resources](http://www.parker.com/hvs/resources)

Flow Division			
Code	Min Inlet	Max Inlet	Split
10-10 <sup>1</sup>	2.1 GPM	5.3 GPM	50/50
20-20 <sup>1</sup>	3.2 GPM	10.6 GPM	50/50
30-30 <sup>1</sup>	3.7 GPM	15.9 GPM	50/50
60-60 <sup>2</sup>	9.2 GPM	31.7 GPM	50/50
90-90 <sup>2</sup>	17.2 GPM	47.8 GPM	50/50
<sup>1</sup> - Size 4A3 only <sup>2</sup> - Size 6A3 only			



## RELIEF VALVES - DIRECT ACTING (*RD series*)

(For more information, see details page [linked here](#))


**RD**

Relief  
Valve  
Direct  
Acting

Size /  
Type

Adjustment  
Style

Pressure  
Range

Seal

Size / Type	
Code	Cavity
H042	C04-2 (1 GPM, 5500 PSI) / Poppet type
H081	C08-2 (0.5 GPM, 5500 PSI) / Ball type
H082	C08-2 (8 GPM, 5500 PSI) / Poppet type
H101	C10-2 (0.5 GPM, 5500 PSI) / Ball type
102	C10-2 (10 GPM, 3000 PSI) / Poppet type

Adjustment Style	
Code	Style
K	Knob
S	Screw
T	Tamperproof

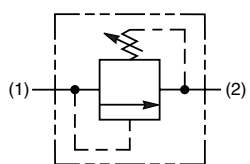
Pressure Range	
Code	Max Pressure
03 <sup>2</sup>	300 PSI
09 <sup>2</sup>	900 PSI
10 <sup>3</sup>	1000 PSI
15 <sup>1</sup>	1500 PSI
18 <sup>2</sup>	1800 PSI
30	3000 PSI
50	5000 PSI
1 - Size H082 only 2 - Size 102 only 3 - Size H081 and H101 only	
<b>For Minimum Pressure, please see product details page.</b>	

Seal	
Code	Material
Omit <sup>1</sup>	"D"-Ring, Nitrile
N <sup>2</sup>	Nitrile
V	Fluorocarbon
1 - Size H081, H082, H10, 10 - "D"-Ring Size H042 - Nitrile 2 - Size H081, H082, H10, 10 only	
<b>"D"-Ring for C08 and C10 cavity sizes only!</b>	

**Highlight** represents Global Core product. More detailed information is available in the Global Core Catalog, MSG15-3504, available online at [www.parker.com/hvs/resources](http://www.parker.com/hvs/resources)

## RELIEF VALVES - DIRECT ACTING (*A04B2 series*)

(For more information, see details page [linked here](#))


**A**

Relief  
Valve  
Direct  
Acting

**04B2**

Size /  
Type

Pressure  
Range

Adjustment  
Style

Seal  
(Nitrile)

Size	
Code	Cavity
04B2	C10-2 (26 GPM, 6000 PSI) / Poppet type

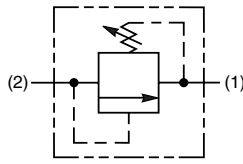
Pressure Range	
Code	Max Pressure
H	3000 PSI
P	6000 PSI
<b>For Minimum Pressure, please see product details page.</b>	

Adjustment Style	
Code	Style
Z	Screw

**Highlight** represents Global Core product. More detailed information is available in the Global Core Catalog, MSG15-3504, available online at [www.parker.com/hvs/resources](http://www.parker.com/hvs/resources)

## RELIEF VALVES - DIFFERENTIAL AREA (*RD series*)

(For more information, see details page [linked here](#))



**RD**  
Relief Valve  
Differential  
Area



Size



Adjustment  
Style



Pressure  
Range



Seal

Size	
Code	Cavity
H083	C08-2 (12 GPM, 5000 PSI)
H103	C10-2 (20 GPM, 5000 PSI)
163	C16-2 (40 GPM, 3000 PSI)

**Highlight** represents Global Core product. More detailed information is available in the Global Core Catalog, MSG15-3504, available online at [www.parker.com/hvs/resources](http://www.parker.com/hvs/resources)

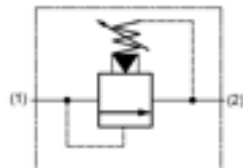
Adjustment Style	
Code	Style
K	Knob
S	Screw
T	Tamperproof

Pressure Range	
Code	Max Pressure
10 <sup>2</sup>	1000 PSI
15 <sup>1</sup>	1500 PSI
30	3000 PSI
50 <sup>3</sup>	5000 PSI
1 - Size H083 only 2 - Size H103 and 163 only 3 - Size H083 and H103 only	
<b>For Minimum Pressure, please see product details page.</b>	

Seal	
Code	Material
Omit <sup>1</sup>	"D"-Ring, Nitrile
N <sup>2</sup>	Nitrile
V	Fluorocarbon
1 - Size H103 - "D"-Ring Size H083, 163 - Nitrile 2 - Size H103 only	
<b>"D"-Ring for C10 cavity size only!</b>	

## RELIEF VALVES - PILOT OPERATED (*RAH series*)

(For more information, see details page [linked here](#))



**RAH**  
Relief Valve  
Pilot  
Operated



Size



Adjustment  
Style



Pressure  
Range



Seal

Size	
Code	Cavity
081	C08-2 (20 GPM, 5000 PSI)
101	C10-2 (30 GPM, 5000 PSI)
121	C12-2 (50 GPM, 5500 PSI)
161	C16-2 (80 GPM, 5500 PSI)
201	C20-2 (100 GPM, 5500 PSI)

**Highlight** represents Global Core product. More detailed information is available in the Global Core Catalog, MSG15-3504, available online at [www.parker.com/hvs/resources](http://www.parker.com/hvs/resources)

Adjustment Style	
Code	Style
K	Knob
S	Screw
T	Tamperproof

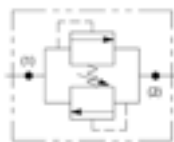
Pressure Range	
Code	Max Pressure
10	1000 PSI
30	3000 PSI
50	5000 PSI
<b>For Minimum Pressure, please see product details page.</b>	

Seal	
Code	Material
Omit <sup>1</sup>	"D"-Ring, Nitrile
N <sup>2</sup>	Nitrile
V	Fluorocarbon
1 - Size 081, 101 - "D"-Ring Size 121, 161, 201 - Nitrile 2 - Size 081, 101 only	
<b>"D"-Ring for C08 and C10 cavity sizes only!</b>	

# Pressure Control Valves

## RELIEF VALVES - CROSSOVER (A04J2 series)

(For more information, see details page [linked here](#))

**A**

Relief  
Valve  
Crossover

**04J2**

Size

**M**

Pressure  
Range

**Z**

Adjustment  
Style

**N**

Seal  
(Nitrile)

Size	
Code	Cavity
04J2	C10-2 (32 GPM, 5000 PSI)

Pressure Range	
Code	Max Pressure
M	5000 PSI

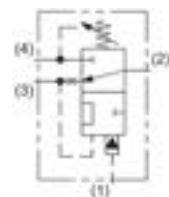
Adjustment Style	
Code	Style
Z	Screw

**For Minimum Pressure,  
please see product  
details page.**

**Highlight** represents Global Core product. More detailed information is available in the Global Core Catalog, MSG15-3504, available online at [www.parker.com/hvs/resources](http://www.parker.com/hvs/resources)

## UNLOADING VALVES (RU10 series)

(For more information, see details page [linked here](#))

**RU**

Unloading  
Valve

Size

Adjustment  
Style

Pressure  
Range

Reload

Seal

Size	
Code	Cavity
101	C10-3 (1 GPM, 3500 PSI)
104	C10-4 (0.25 GPM, 3600 PSI)

Adjustment Style	
Code	Style
K <sup>1</sup>	Knob
S	Screw
T <sup>2</sup>	Tamperproof
1 - Size 101 only 2 - Size 104 only	

Pressure Range	
Code	Max Pressure
10 <sup>1</sup>	1000 PSI
12 <sup>2</sup>	1200 PSI
24 <sup>2</sup>	2400 PSI
30 <sup>1</sup>	3000 PSI
36 <sup>2</sup>	3600 PSI
1 - Size 101 only 2 - Size 104 only	

Reload (+/- 5% of pressure setting)	
Code	Style
B <sup>2</sup>	80%
C <sup>1</sup>	80%
1 - Size 101 only 2 - Size 104 only	

Seal	
Code	Material
Omit <sup>1</sup>	"D"-Ring, Nitrile
N <sup>2</sup>	Nitrile
V	Fluorocarbon
1 - Size 104 - "D"-Ring Size 101 - Nitrile 2 - Size 104 only	
<b>"D"-Ring for C10-4 cavity size only!</b>	

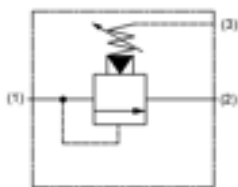
**Highlight** represents Global Core product. More detailed information is available in the Global Core Catalog, MSG15-3504, available online at [www.parker.com/hvs/resources](http://www.parker.com/hvs/resources)

**For Minimum Pressure,  
please see product  
details page.**

# Pressure Control Valves

17

## SEQUENCE VALVES - INTERNAL P.O. (SVH\*\*1 series) (For more information, see details page [linked here](#))


**SVH**

Sequence  
Valve  
Int. Pilot  
Operated



Size



Adjustment  
Style



Pressure  
Range



Seal

Size	
Code	Cavity
081	C08-3 (12 GPM, 5500 PSI)
101	C10-3 (15 GPM, 5500 PSI)
161	C16-3 (40 GPM, 5500 PSI)

Adjustment Style	
Code	Style
K	Knob
S	Screw
T	Tamperproof

Pressure Range	
Code	Max Pressure
10	1000 PSI
30	3000 PSI
50	5000 PSI

**For Minimum Pressure,  
please see product  
details page.**

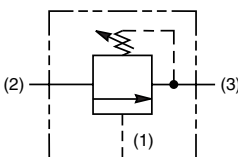
Seal	
Code	Material
Omit <sup>1</sup>	"D"-Ring, Nitrile
N <sup>2</sup>	Nitrile
V	Fluorocarbon

1 - Size 081, 101 - "D"-Ring  
Size 161 - Nitrile  
2 - Size 081, 101 only

**"D"-Ring for C08 and  
C10 cavity sizes only!**

**Highlight** represents Global Core product. More detailed information is available in the Global Core Catalog, MSG15-3504, available online at [www.parker.com/hvs/resources](http://www.parker.com/hvs/resources)

## SEQUENCE VALVES - EXTERNAL P.O. (SVH1\*2 series) (For more information, see details page [linked here](#))


**SVH**

Sequence  
Valve  
Ext. Pilot  
Operated



Size



Adjustment  
Style



Pressure  
Range



Seal

Size	
Code	Cavity
102	C10-3 (15 GPM, 5500 PSI)
162	C16-3 (40 GPM, 5500 PSI)

Adjustment Style	
Code	Style
K	Knob
S	Screw
T	Tamperproof

Pressure Range	
Code	Max Pressure
10	1000 PSI
30	3000 PSI
50	5000 PSI

**For Minimum Pressure,  
please see product  
details page.**

Seal	
Code	Material
Omit <sup>1</sup>	"D"-Ring, Nitrile
N <sup>2</sup>	Nitrile
V	Fluorocarbon

1 - Size 102 - "D"-Ring  
Size 162 - Nitrile  
2 - Size 102 only

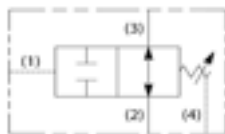
**"D"-Ring for C10 cavity  
size only!**

**Highlight** represents Global Core product. More detailed information is available in the Global Core Catalog, MSG15-3504, available online at [www.parker.com/hvs/resources](http://www.parker.com/hvs/resources)

# Pressure Control Valves

## SEQUENCE VALVES - DIRECT ACTING (SV10 series)

(For more information, see details page [linked here](#))


**SV**

Sequence  
Valve  
Direct  
Acting

Size

Adjustment  
StylePressure  
Range

Seal

Size		
Code	Cavity	Symbol
103	C10-3 (15 GPM, 3600 PSI)	
104	C10-4 (8 GPM, 3600 PSI)	
105	C10-3 (10 GPM, 3600 PSI)	

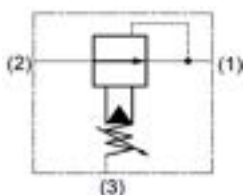
Adjustment Style	
Code	Style
K	Knob
S	Screw
T	Tamperproof

Pressure Range	
Code	Max Pressure
06	600 PSI
20	2000 PSI
<b>For Minimum Pressure, please see product details page.</b>	

Seal	
Code	Material
Omit	"D"-Ring
N	Nitrile
V	Fluorocarbon

## REDUCING VALVES - PILOT OPERATED (PRH\*\*2 series)

(For more information, see details page [linked here](#))


**PRH**

Reducing  
Valve  
Pilot  
Operated

Size

Adjustment  
StylePressure  
Range

Seal

Size	
Code	Cavity
082	C08-3 (8 GPM, 5500 PSI)
102	C10-3 (15 GPM, 5500 PSI)
122	C12-3 (30 GPM, 5500 PSI)
162	C16-3 (40 GPM, 5500 PSI)

Adjustment Style	
Code	Style
K	Knob
S	Screw
T	Tamperproof

Pressure Range	
Code	Max Pressure
10	1000 PSI
30	3000 PSI
50	5000 PSI

**For Minimum Pressure, please see product details page.**

Seal	
Code	Material
Omit <sup>1</sup>	"D"-Ring, Nitrile
N <sup>2</sup>	Nitrile
V	Fluorocarbon

<sup>1</sup> - Size 082, 102 - "D"-Ring  
Size 122, 162 - Nitrile  
<sup>2</sup> - Size 082, 102 only

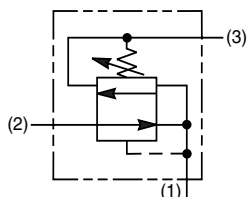
**"D"-Ring for C08 and C10 cavity sizes only!**

**Highlight** represents Global Core product. More detailed information is available in the Global Core Catalog, MSG15-3504, available online at [www.parker.com/hvs/resources](http://www.parker.com/hvs/resources)

# Pressure Control Valves

## REDUCING/RELIEVING VALVES - D.A. (PR103 series)

(For more information, see details page [linked here](#))


**PR**

Reducing/  
Relieving  
Valve  
D.A.

**103**

Size



Adjustment  
Style



Pressure  
Range



Seal

Size	
Code	Cavity
103	C10-3 (15 GPM, 3000 PSI)

**Highlight** represents Global Core product. More detailed information is available in the Global Core Catalog, MSG15-3504, available online at [www.parker.com/hvs/resources](http://www.parker.com/hvs/resources)

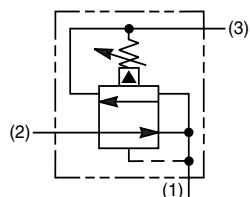
Adjustment Style	
Code	Style
K	Knob
S	Screw
T	Tamperproof

Pressure Range	
Code	Max Pressure
12	1200 PSI
21	1800 PSI
<b>For Minimum Pressure, please see product details page.</b>	

Seal	
Code	Material
Omit	"D"-Ring
N	Nitrile
V	Fluorocarbon

## REDUCING/RELIEVING VALVES - P.O. (PRH\*\*1 series)

(For more information, see details page [linked here](#))


**PRH**

Reducing  
Valve  
Pilot  
Operated



Size



Adjustment  
Style



Pressure  
Range



Seal

Size	
Code	Cavity
081	C08-3 (8 GPM, 5500 PSI)
101	C10-3 (15 GPM, 5500 PSI)
121	C12-3 (30 GPM, 5500 PSI)
161	C16-3 (40 GPM, 5500 PSI)

**Highlight** represents Global Core product. More detailed information is available in the Global Core Catalog, MSG15-3504, available online at [www.parker.com/hvs/resources](http://www.parker.com/hvs/resources)

Adjustment Style	
Code	Style
K	Knob
S	Screw
T	Tamperproof

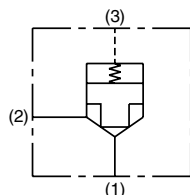
Pressure Range	
Code	Max Pressure
10	1000 PSI
30	3000 PSI
50	5000 PSI
<b>For Minimum Pressure, please see product details page.</b>	

Seal	
Code	Material
Omit <sup>1</sup>	"D"-Ring, Nitrile
N <sup>2</sup>	Nitrile
V	Fluorocarbon
<sup>1</sup> - Size 081, 101 - "D"-Ring <sup>2</sup> - Size 121, 161 - Nitrile <b>"D"-Ring for C08 and C10 cavity sizes only!</b>	

# Logic Element Valves

## LOGIC ELEMENT - POPPET TYPE (*LE101A series*)

(For more information, see details page [linked here](#))



**LE**

Logic  
Element

**101**

Size /  
Type

**A**

Normally  
Closed /  
Pilot to  
Close

Bias  
Spring

Seal

Size	
Code	Cavity
101	C10-3S (15 GPM, 5000 PSI) / Poppet Type

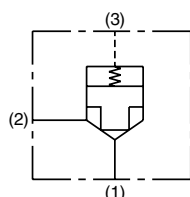
Bias Spring	
Code	Range
02	25 PSI
04	50 PSI
05	75 PSI
07	100 PSI
10	150 PSI

Seal	
Code	Material
Omit	"D"-Ring
N	Nitrile
V	Fluorocarbon

**Highlight** represents Global Core product. More detailed information is available in the Global Core Catalog, MSG15-3504, available online at [www.parker.com/hvs/resources](http://www.parker.com/hvs/resources)

## LOGIC ELEMENT - POPPET TYPE (*\*\*SLC1-A series*)

(For more information, see details page [linked here](#))



Size

**SLC1**

Logic  
Element  
Poppet  
Type

**A**

Normally  
Closed /  
Pilot to  
Close

Bias  
Spring

Seal

Size	
Code	Cavity
16	C16-3S (50 GPM, 3500 PSI)
20	C20-3S (80 GPM, 3500 PSI)

Bias Spring	
Code	Range
25	25 PSI
50	50 PSI
75	75 PSI
100 <sup>1</sup>	100 PSI
150 <sup>1</sup>	150 PSI
<sup>1</sup> - Indicates larger cap height	

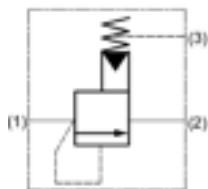
Seal	
Code	Material
Omit	Polyurethane, EPS
V	Fluorocarbon

**Highlight** represents Global Core product. More detailed information is available in the Global Core Catalog, MSG15-3504, available online at [www.parker.com/hvs/resources](http://www.parker.com/hvs/resources)

# Logic Element Valves

## LOGIC ELEMENT - SPOOL TYPE (*LE102A series*)

(For more information, see details page [linked here](#))



**LE**

Logic  
Element

**102**

Size /  
Type

**A**

Normally  
Closed /  
Pilot to  
Close

Bias  
Spring

Seal

Size	
Code	Cavity
102	C10-3S (15 GPM, 5000 PSI) / Spool Type

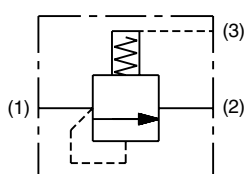
Bias Spring	
Code	Range
01	25 PSI
05	50 PSI
07	100 PSI
10	150 PSI
15	218 PSI
20	290 PSI

Seal	
Code	Material
Omit	"D"-Ring
N	Nitrile
V	Fluorocarbon

**Highlight** represents Global Core product. More detailed information is available in the Global Core Catalog, MSG15-3504, available online at [www.parker.com/hvs/resources](http://www.parker.com/hvs/resources)

## LOGIC ELEMENT - SPOOL TYPE (*\*\*SLC2-A series*)

(For more information, see details page [linked here](#))



Size

**SLC2**

Logic  
Element  
Spool  
Type

**A**

Normally  
Closed /  
Pilot to  
Close

Bias  
Spring

Seal

Size	
Code	Cavity
16	C16-3S (50 GPM, 3500 PSI)
20	C20-3S (80 GPM, 3500 PSI)

Bias Spring	
Code	Range
25	25 PSI
50	50 PSI
75	75 PSI
100 <sup>1</sup>	100 PSI
150 <sup>1</sup>	150 PSI
<sup>1</sup> - Indicates larger cap height	

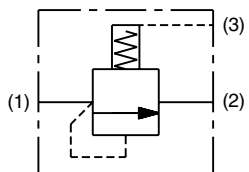
Seal	
Code	Material
Omit	Polyurethane, EPS
V	Fluorocarbon



# Logic Element Valves

## LOGIC ELEMENT - SPOOL TYPE (*R0\*E3 series*)

(For more information, see details page [linked here](#))



<b>R0</b>		<b>E3</b>	-		<b>N</b>
Logic Element Spool Type	Size	Normally Closed / Pilot to Close	Bias Spring	Seal (Nitrile)	

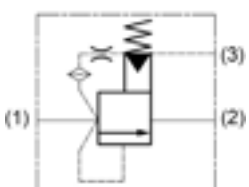
Size	
Code	Cavity
6	C16-3S (106 GPM, 6000 PSI)
8	C20-3S (132 GPM, 6000 PSI)

Bias Spring	
Code	Range
10.0	145 PSI
15.0	218 PSI

**Highlight** represents Global Core product. More detailed information is available in the Global Core Catalog, MSG15-3504, available online at [www.parker.com/hvs/resources](http://www.parker.com/hvs/resources)

## LOGIC ELEMENT - SPOOL TYPE (*LE102B series*)

(For more information, see details page [linked here](#))



<b>LE</b>	<b>102</b>	<b>B</b>		
Logic Element	Size / Type	Normally Closed / Vent to Open	Bias Spring	Seal

Size	
Code	Cavity
102	C10-3S (15 GPM, 5000 PSI) / Spool Type

Bias Spring	
Code	Range
01	25 PSI
05	50 PSI
07	100 PSI
10	150 PSI
15	218 PSI
20	290 PSI

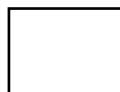
Seal	
Code	Material
Omit	"D"-Ring
N	Nitrile
V	Fluorocarbon

**Highlight** represents Global Core product. More detailed information is available in the Global Core Catalog, MSG15-3504, available online at [www.parker.com/hvs/resources](http://www.parker.com/hvs/resources)

# Logic Element Valves

## LOGIC ELEMENT - SPOOL TYPE (*\*\*SLC2-B series*)

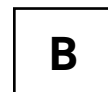
(For more information, see details page [linked here](#))



Size



Logic  
Element  
Spool  
Type



Normally  
Closed /  
Vent to  
Open



Bias  
Spring



Seal

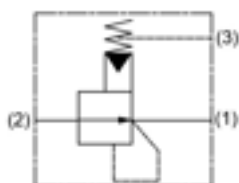
Size	
Code	Cavity
16	C16-3S (50 GPM, 3500 PSI)
20	C20-3S (80 GPM, 3500 PSI)

Bias Spring	
Code	Range
25	25 PSI
50	50 PSI
75	75 PSI
100 <sup>1</sup>	100 PSI
150 <sup>1</sup>	150 PSI
<sup>1</sup> - Indicates larger cap height	

Seal	
Code	Material
Omit	Polyurethane, EPS
V	Fluorocarbon

## LOGIC ELEMENT - SPOOL TYPE (*LE103A series*)

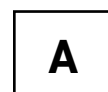
(For more information, see details page [linked here](#))



Logic  
Element



Size /  
Type



Normally  
Open /  
Vent to  
Close



Bias  
Spring



Seal

Size	
Code	Cavity
103	C10-3S (15 GPM, 5000 PSI) / Spool Type

Bias Spring	
Code	Range
01	25 PSI
05	50 PSI
07	100 PSI
10	150 PSI
15	218 PSI
20	290 PSI

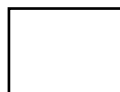
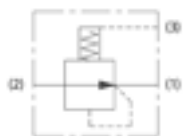
Seal	
Code	Material
Omit	"D"-Ring
N	Nitrile
V	Fluorocarbon

**Highlight** represents Global Core product. More detailed information is available in the Global Core Catalog, MSG15-3504, available online at [www.parker.com/hvs/resources](http://www.parker.com/hvs/resources)

# Logic Element Valves

## LOGIC ELEMENT - SPOOL TYPE (*\*\*SLC3-A series*)

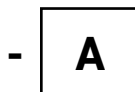
(For more information, see details page [linked here](#))



Size



Logic  
Element  
Spool  
Type



Normally  
Closed /  
Vent to  
Open



Bias  
Spring



Seal

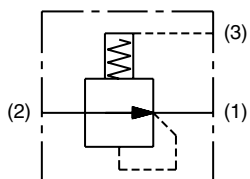
Size	
Code	Cavity
16	C16-3S (50 GPM, 3500 PSI)
20	C20-3S (80 GPM, 3500 PSI)

Bias Spring	
Code	Range
25	25 PSI
50	50 PSI
75	75 PSI
100 <sup>1</sup>	100 PSI
150 <sup>1</sup>	150 PSI
<sup>1</sup> - Indicates larger cap height	

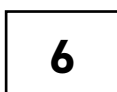
Seal	
Code	Material
Omit	Polyurethane, EPS
V	Fluorocarbon

## LOGIC ELEMENT - SPOOL TYPE (*R0\*H3 series*)

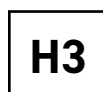
(For more information, see details page [linked here](#))



Logic  
Element  
Spool  
Type



Size



Normally  
Open /  
Vent to  
Close



Bias  
Spring



Seal  
(Nitrile)

Size	
Code	Cavity
6	C16-3S (42 GPM, 6000 PSI)

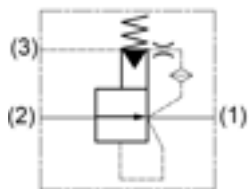
Bias Spring	
Code	Range
10.0	145 PSI
15.0	218 PSI

**Highlight** represents Global Core product. More detailed information is available in the Global Core Catalog, MSG15-3504, available online at [www.parker.com/hvs/resources](http://www.parker.com/hvs/resources)

# Logic Element Valves

## LOGIC ELEMENT - SPOOL TYPE (*LE103B series*)

(For more information, see details page [linked here](#))



**LE**  
Logic Element

**103**  
Size / Type

**B**  
Normally Closed / Vent to Open

**Bias Spring**

**Seal**

Size	
Code	Cavity
103	C10-3S (15 GPM, 5000 PSI) / Spool Type

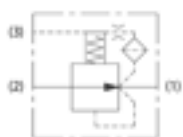
Bias Spring	
Code	Range
01	25 PSI
05	50 PSI
07	100 PSI
10	150 PSI
15	218 PSI
20	290 PSI

Seal	
Code	Material
Omit	"D"-Ring
N	Nitrile
V	Fluorocarbon

**Highlight** represents Global Core product. More detailed information is available in the Global Core Catalog, MSG15-3504, available online at [www.parker.com/hvs/resources](http://www.parker.com/hvs/resources)

## LOGIC ELEMENT - SPOOL TYPE (*\*\*SLC3-B series*)

(For more information, see details page [linked here](#))



**Size**

**SLC3**  
Logic Element Spool Type

**B**  
Normally Closed / Vent to Open

**Bias Spring**

**Seal**

Size	
Code	Cavity
16	C16-3S (50 GPM, 3500 PSI)
20	C20-3S (80 GPM, 3500 PSI)

Bias Spring	
Code	Range
25	25 PSI
50	50 PSI
75	75 PSI
100 <sup>1</sup>	100 PSI
150 <sup>1</sup>	150 PSI
<sup>1</sup> - Indicates larger cap height	

Seal	
Code	Material
Omit	Polyurethane, EPS
V	Fluorocarbon

# Directional Control Valves

## DIRECTIONAL CONTROL - 3-Way (DH103 series)

(For more information, see details page [linked here](#))



**DH**

Directional  
Control  
/ Closed  
Transition

**103**

Size

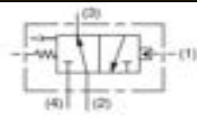
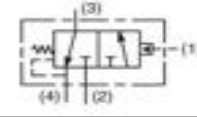
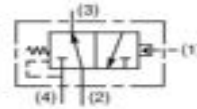
Function

Shift  
Pressure

Seal

Size	
Code	Cavity
103	C10-4 (10 GPM, 5000 PSI)

**Highlight** represents Global Core product. More detailed information is available in the Global Core Catalog, MSG15-3504, available online at [www.parker.com/hvs/resources](http://www.parker.com/hvs/resources)

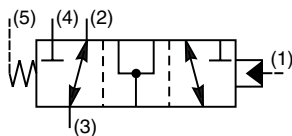
Function	
Code	Function
A	N.O., 2-pos, Vent to Atms. 
B	N.C., 2-pos, Internal Drain 
C	N.O., 2-pos, Internal Drain 

Shift Pressure	
Code	Pressure
Omit	80 PSI
04	40 PSI
16	160 PSI

Seal	
Code	Material
Omit	Nitrile
V	Fluorocarbon

## DIRECTIONAL CONTROL - 3-Way (N5\* series)

(For more information, see details page [linked here](#))



**N5**

Directional  
Control  
/ Open  
Transition

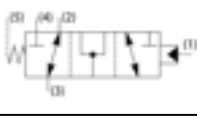
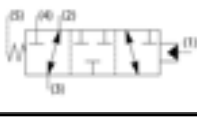
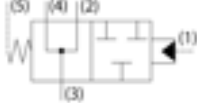
Function

Size

-

Shift  
Pressure

Seal

Function	
Code	Function
A	All Ports Open 
B	All Ports Closed 
C	Diverter, All Ports Open 

Size	
Code	Cavity
125	5A (42.3 GPM, 6000 PSI)
300 <sup>1</sup>	100-1 (105 GPM, 6000 PSI)
<sup>1</sup> - Function A and B only	

Seal	
Code	Material
N	Nitrile
V	Fluorocarbon

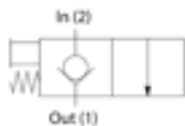
Shift Pressure	
Code	Pressure
5.0 <sup>1</sup>	73 PSI
6.9	100 PSI
10.0	145 PSI
15.0 <sup>1</sup>	217 PSI
<sup>1</sup> - Size 125 only	

**Highlight** represents Global Core product. More detailed information is available in the Global Core Catalog, MSG15-3504, available online at [www.parker.com/hvs/resources](http://www.parker.com/hvs/resources)

# Manual Valves

## MANUAL VALVE - 2-POS./2-WAY (DL\*\*\* series)

(For more information, see details page [linked here](#))


**DL**

Manual Valve /  
Poppet  
Type

Size

Actuator  
Type

Seal

Size	
Code	Cavity
081	C08-2 (8 GPM, 3000 PSI)
101	C10-2 (13 GPM, 3000 PSI)

Actuator	
Code	Type
K	Knob
L <sup>1</sup>	Lever
P <sup>1</sup>	Lock Pin
T	Stem
1 - Size 081 only.	

Seal	
Code	Material
Omit <sup>1</sup>	"D"-Ring, Nitrile
N <sup>2</sup>	Nitrile
V	Fluorocarbon
1 - Size 081 with actuator K, P, or T - "D"-Ring Size 101 - Nitrile	
2 - Size 081 only	

## MANUAL VALVE - ROTARY SPOOL (DM\*\*\* series)

(For more information, see details page [linked here](#):  
[DM103](#) [DM104](#))


**DM**

Manual Valve /  
Rotary  
Spool

Size

Actuator  
Type

Spool  
Option  
(**DM104  
Only**)

Seal

Size	
Code	Cavity
103	C10-3 (6 GPM, 3500 PSI)
104	C10-4 (2 GPM, 3500 PSI)

Actuator		Schematic	
Code	Type	DM103*	DM104*
K	Knob		
LD	Lever w/2 pos. detent		
LN	Lever w/3 pos. detent		
FKD	Finger Knob w/2 pos. detent		
FKN	Finger Knob w/3 pos. detent		

Spool Option (DM104 Only)		
Code	Style	Schematic
1	Closed Center	
8	Open Center	

Seal	
Code	Material
Omit	Nitrile
V	Fluorocarbon

# Manual Valves

## MANUAL VALVE - 3-POS./4-WAY (DMH085 series)

(For more information, see details page [linked here](#))


**DMH**

Manual  
Valve /  
Directional  
Control

Size

Style

Seal

Size	
Code	Cavity
085	C08-4 (5000 PSI) <sup>1</sup>
<sup>1</sup> - Tank (port 1) pressure 500 PSI	

Style		
Code	Style	Schematic
C1	Closed Center / 4.5 GPM	
C2	Open Center / 4.0 GPM	
C4	Floating Center / 5.0 GPM	
C9	Tandem Center / 4.0 GPM	

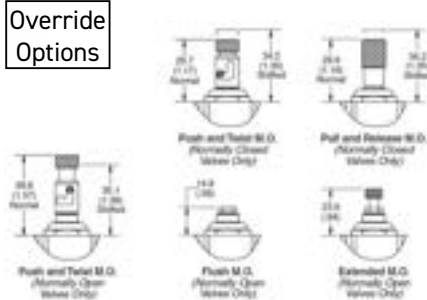
Seal	
Code	Material
Omit	"D"-Ring
N	Nitrile
V	Fluorocarbon

## POPPET TYPE, 2-WAY (DS\*\*\*1 series)

(For more information, see details page [linked here](#))



Override  
Options



Coil(s) sold separately.  
Please see section CE for  
more information.

Model	Super Coil
DS*081	CC (1/2")
DS*101	CA (5/8")
DSH121	CA (5/8")
DSH161	CA (5/8")
DSL201	CA (5/8")

\*L=Low Pressure (3600 PSI)  
H=High Pressure (5000 PSI)

DS			1				
----	--	--	---	--	--	--	--

Solenoid  
Valve /  
2W/2P

Pressure

Size

Poppet  
Type

Function

Override

Seal

Screen

Pressure	
Code	Max Pressure Rating
L	3600 PSI
H	5000 PSI

Size	
Code	Cavity Size
08	C08-2 (8 GPM)
10	C10-2 (15 GPM)
12 <sup>1</sup>	C12-2 (24 GPM)
16 <sup>1</sup>	C16-2 (40 GPM)
20 <sup>2</sup>	C20-2 (70 GPM)

1 - High pressure (5000 psi)  
only  
2 - Low pressure (3600 psi)  
only

Function		
Code	Function	
C	Normally Closed Metered Rev. Flow	
CH <sup>1</sup>	Normally Closed Metered Rev. Flow (Fast Response)	
CHR <sup>2</sup>	Normally Closed Free Rev. Flow (Fast Response)	
CR	Normally Closed Free Rev. Flow	
N	Normally Open Metered Rev. Flow	
NR	Normally Open Free Rev. Flow	

1 - 08, 10, 12, and 16 size only  
2 - 08, 10, and 12 size only

Override	
Code	Option
Omit	None
E <sup>1</sup>	Push Type, Extended Rod
M <sup>1</sup>	Push Type, Flush Rod
P <sup>2,3</sup>	Pull/Release
T	Push/Twist

1 - Normally Open only  
2 - Normally Closed only  
3 - Low pressure (3600 psi)  
only

Seal	
Code	Material
Omit <sup>1</sup>	"D"-Ring, Nitrile
N <sup>2</sup>	Nitrile
V	Fluorocarbon

1 - Size 08, 10 - "D"-Ring  
Size 12, 16, 20 - Nitrile  
2 - Size 08, 10 only

"D"-Ring for C08 and C10  
cavity sizes only!

**Highlight** represents Global Core  
product. More detailed information is  
available in the Global Core Catalog,  
MSG15-3504, available online at  
[www.parker.com/hvs/resources](http://www.parker.com/hvs/resources)

Screen	
Code	Option
Omit	None
S <sup>1</sup>	Screen

1 - 08 & 10 size  
only

North American Regional  
Threaded Cartridge Valves

MSG15-4000  
Solenoid Valves



# Solenoid Valves

## POPPET TYPE, 2-WAY, BI-DIRECTIONAL (*DSL087 series*)



Override  
Option



N.O. only

Coil(s) sold separately.  
Please see section CE for  
more information.

(For more information, see  
details page [linked here](#))

Model	Super Coil
DSL087*	CC (1/2")

**DSL**

**087**



Solenoid  
Valve /  
2W/2P

Size

Style

Override

Screen

Seal

Size	
Code	Cavity Size
087	C08-2 (0.3 GPM)

Function		
Code	Function	
C	Normally Closed (3600 PSI)	
N	Normally Open (3600 PSI)	

Screen	
Code	Option
Omit	None
S	Screen

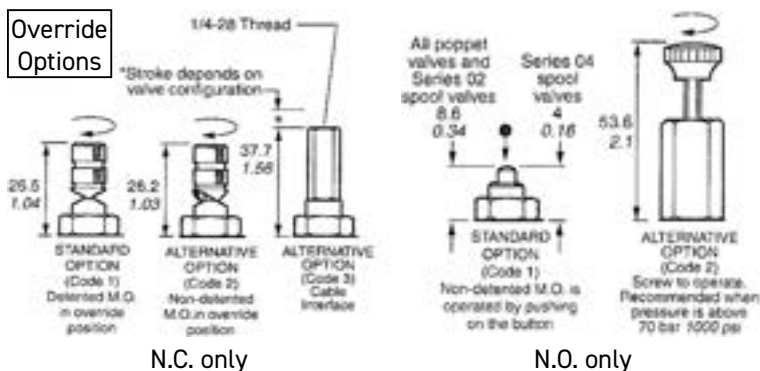
**Highlight** represents Global Core product. More detailed information is available in the Global Core Catalog, MSG15-3504, available online at [www.parker.com/hvs/resources](http://www.parker.com/hvs/resources)

Override	
Code	Option
Omit	None
M'	Push Type, Flush Rod
1 - Normally Open only	

Seal	
Code	Material
Omit	"D"-Ring
N	Nitrile
V	Fluorocarbon

# Solenoid Valves

## POPPET TYPE, 2-WAY, BI-DIRECTIONAL (*GS0\*8\* series*)



(For more information, see details page [linked here](#))

Coil(s) sold separately. Please see section CE for more information.

Model	Super Coil
GS02*	CC (1/2")
GS04*	CC (1/2")
GS06*	CC (1/2")

**GS**



**0**

**N**

Solenoid  
Valve /  
2W/2P

Size

Function

Override

Screen

Seal  
(Nitrile)

Size	
Code	Cavity Size
02	C08-2 (9 GPM)
04	2R (18 GPM)
06	C16-2 (75 GPM)

Function		
Code	Function	
80	Normally Closed (3000 PSI)	
81	Normally Closed (5000 PSI)	
85	Normally Open (3000 PSI)	
86	Normally Open (5000 PSI)	

Override			
80/81 (Normally Closed)		85/86 (Normally Open)	
Code	Override	Code	Override
0	None	0	None
1	Detented	1	Non-Detented
2	Non-Detented	2	Detented
3'	Cable Interface		
1 - Function Code 80 only			

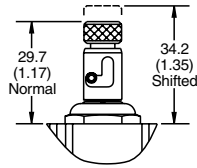
**Highlight** represents Global Core product. More detailed information is available in the Global Core Catalog, MSG15-3504, available online at [www.parker.com/hvs/resources](http://www.parker.com/hvs/resources)

## SPOOL TYPE, 2-WAY (DS\*\*\*2 series)

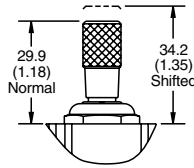
(For more information, see details page [linked here](#))



### Override Options



Push and Twist M.O.



Pull and Release M.O.

Coil(s) sold separately. Please see section CE for more information.

Model	Super Coil
DS*082	CC (1/2")
DS*102	CA (5/8")
DS162	1" DS

\*L=Low Pressure (3600 PSI)  
H=High Pressure (5000 PSI)

<b>DS</b>			<b>2</b>				
Solenoid Valve / 2W/2P	Pressure	Size	Spool Type	Function	Override	Seal	Screen

Pressure	
Code	Max Pressure Rating
Omit <sup>1</sup>	3000 PSI
L <sup>2</sup>	3600 PSI
H <sup>2</sup>	5000 PSI
1 - Size 16 only. 2 - Size 08 and 10 only	

Function	
Code	Function
C	Normally Closed
N	Normally Open

Override	
Code	Option
Omit <sup>1</sup>	None, Push and Release
P <sup>2,3</sup>	Pull and Release
T <sup>2</sup>	Push and Twist
1 - Size 08 and 10 - None. Size 16 - Push and Release. 2 - Size 08 and 10 only. 3 - Low Pressure (3600 psi) only.	
<b>P and T for C08 and C10 cavity sizes only!</b>	

Size	
Code	Cavity Size
08	C08-2 (4 GPM)
10	C10-2 (8 GPM)
16	C16-2 (20 GPM)

Seal	
Code	Material
Omit <sup>1</sup>	"D"-Ring, Nitrile
N <sup>2</sup>	Nitrile
V	Fluorocarbon
1 - Size 08, 10 - "D"-Ring Size 16 - Nitrile 2 - Size 08, 10 only	
<b>"D"-Ring for C08 and C10 cavity sizes only!</b>	

Screen	
Code	Option
Omit	None
S <sup>1</sup>	Screen
1 - 08 & 10 size only	

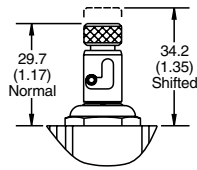
**Highlight** represents Global Core product. More detailed information is available in the Global Core Catalog, MSG15-3504, available online at [www.parker.com/hvs/resources](http://www.parker.com/hvs/resources)

## SPOOL TYPE, 3-WAY (DS\*\*\*3 series)

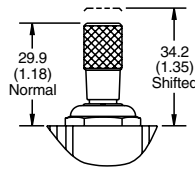
(For more information, see details page [linked here](#))



Override  
Options



Push and Twist M.O.



Pull and Release M.O.

Coil(s) sold separately.  
Please see section CE for  
more information.

Model	Super Coil
DS*083	CC (1/2")
DS*103	CA (5/8")
DS163	1" DS

\*L=Low Pressure (3600 PSI)  
H=High Pressure (5000 PSI)



Solenoid Valve / 3W/2P      Pressure      Size      3      Spool Type      Spool Function      Override      Seal

Pressure	
Code	Max Pressure Rating
Omit <sup>1</sup>	3000 PSI
L <sup>2</sup>	3600 PSI
H <sup>2</sup>	5000 PSI

1 - Size 16 only.  
2 - Size 08 and 10 only.

Size	
Code	Cavity Size
08	C08-3 (up to 4 GPM)
10	C10-3 (up to 8 GPM)
16	C16-3 (up to 15 GPM)

Spool Function	
Code	Function
Omit <sup>1</sup>	
A <sup>2</sup>	
B	
C <sup>2</sup>	
N <sup>2</sup>	

1 - Size 16 only.  
2 - Size 08 and 10 only.

Override	
Code	Option
Omit <sup>1</sup>	None, Push and Release
P <sup>2,3</sup>	Pull and Release
T <sup>2</sup>	Push and Twist

1 - Size 08 and 10 - None.  
Size 16 - Push and Release.  
2 - Size 08 and 10 only.  
3 - Size 08 and 10, Low Pressure (3600 psi) only.

**P and T for C08 and C10 cavity sizes only!**

Seal	
Code	Material
Omit <sup>1</sup>	"D"-Ring, Nitrile
N <sup>2</sup>	Nitrile
V	Fluorocarbon

1 - Size 08, 10 - "D"-Ring  
Size 16 - Nitrile  
2 - Size 08, 10 only

**"D"-Ring for C08 and C10 cavity sizes only!**

**Highlight** represents Global Core product. More detailed information is available in the Global Core Catalog, MSG15-3504, available online at [www.parker.com/hvs/resources](http://www.parker.com/hvs/resources)

# Solenoid Valves

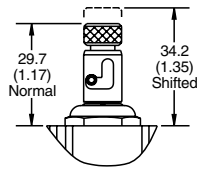
34

## SPOOL TYPE, 4-WAY, 2-POS. (DS\*\*\*4 series)

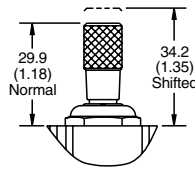
(For more information, see details page [linked here](#))



Override  
Options



Push and Twist M.O.



Pull and Release M.O.

Coil(s) sold separately.  
Please see section CE for  
more information.

Model	Super Coil
DS*084	CC (1/2")
DS*104	CA (5/8")
DSH164	CC (1/2")

\*L=Low Pressure (3600 PSI)  
H=High Pressure (5000 PSI)

<b>DS</b>			<b>4</b>			
Solenoid Valve / 4W/2P	Pressure	Size	Spool Type	Spool Function	Override	Seal

Pressure	
Code	Max Pressure Rating
L <sup>1</sup>	3600 PSI
H	5000 PSI
1 - Size 08 and 10 only.	

Size	
Code	Cavity Size
08	C08-4 (up to 4 GPM)
10	C10-4 (up to 10 GPM)
16	C16-4 (30 GPM)

**Highlight** represents Global Core product. More detailed information is available in the Global Core Catalog, MSG15-3504, available online at [www.parker.com/hvs/resources](http://www.parker.com/hvs/resources)

Spool Function					
Size 08		Size 10		Size 16	
Code	Function	Code	Function	Code	Function
B		B		H	
E1		B2		HR	
M		E1		<b>Seal</b>	
M9		E4		Code	Material
N		E15		Omit <sup>1</sup>	"D"-Ring, Nitrile
		H		N <sup>2</sup>	Nitrile
		M		V	Fluorocarbon
		N		1 - Size 08, 10 - "D"-Ring Size 16 - Nitrile 2 - Size 08, 10 only	
				<b>"D"-Ring for C08 and C10 cavity sizes only!</b>	
				<b>Override</b>	
				Code	Option
				Omit	None
				P <sup>1,2</sup>	Pull and Release
				T <sup>1</sup>	Push and Twist
				1 - Size 08 and 10 only. 2 - Low Pressure (3600 psi) only.	

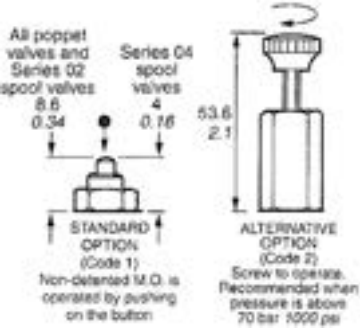
# Solenoid Valves

## SPOOL TYPE, 4-WAY, 2-POS. (GS0242\* series)

(For more information, see details page [linked here](#))



Override Options



Coil(s) sold separately. Please see section CE for more information.	
Model	Super Coil
GS0242*	CC (1/2")

**GS**

Solenoid Valve / 4W/2P

**02**

Size

**42**

Function

Override

**0**

Screen

**N**

Seal (Nitrile)

Size	
Code	Cavity Size
02	C08-4 (5000 PSI, 5 GPM)

Spool Function	
Code	Function
42	

Override	
Code	Option
0	None
1	Non-Detented
2	Detented

Screen	
Code	Option
0	None

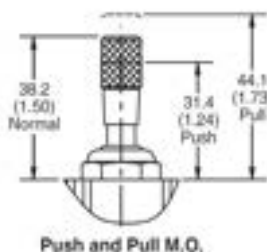
# Solenoid Valves

## SPOOL TYPE, 4-WAY, 3-POS. (DSL105 series)

(For more information, see details page [linked here](#))



Override  
Option



Coil(s) sold separately.  
Please see section CE for  
more information.

Model	Super Coil
DSL105	CA (5/8")

<b>DS</b>	<b>L</b>	<b>10</b>	<b>5</b>			
Solenoid Valve / 4W/3P	Pressure	Size	Spool Type	Spool Function	Override	Seal

Pressure	
Code	Max Pressure Rating
L	3600 PSI

Size	
Code	Cavity Size
10	C10-4

Spool Function	
Code	Function
C1 (7 GPM)	
C2 (5 GPM)	
C4 (7 GPM)	
C7 (5 GPM)	
C9 (5 GPM)	

Override	
Code	Option
Omit	None
M	Push/Pull

Seal	
Code	Material
Omit	"D"-Ring
N	Nitrile
V	Fluorocarbon

**Highlight** represents Global Core product. More detailed information is available in the Global Core Catalog, MSG15-3504, available online at [www.parker.com/hvs/resources](http://www.parker.com/hvs/resources)

## SPOOL TYPE, 4-WAY, 3-POS. (GS0\*5\* series)

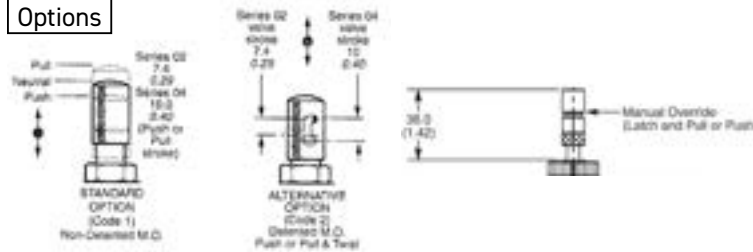
(For more information, see details page [linked here](#))



Override  
Options

GS025\* only

GS045\* only



Coil(s) sold separately.  
Please see section CE for  
more information.

Model	Super Coil
GS025*	CC (1/2")
GS045*	CA (5/8")

<b>GS</b>				<b>0</b>		<b>D</b>
Solenoid Valve / 4W/3P	Size	Spool Type	Override	Screen	Seal	Design Level ( <b>GS045 Only</b> )

Size	
Code	Cavity Size
02	C08-4 (5000 PSI) <sup>1</sup>
04	C10-4 (5000 PSI) <sup>1</sup>
<sup>1</sup> - Tank (port 1) pressure 3000 PSI	

Override			
Size 02		Size 04	
Code	Override	Code	Override
0	None	0	None
1	Non-Detented	5	Detented (center only)
2	Detented	6	Detented (all positions)

Spool Function			
Size 02		Size 04	
Code	Function	Code	Function
51 (4.5 GPM)		52 (11 GPM)	
53 (4 GPM)		54 (11 GPM)	
57 (3.5 GPM)		57 (11 GPM)	
59 (3.5 GPM)		59 (11 GPM)	

Screen	
Code	Option
0	None

Seal	
Code	Material
N	Nitrile
V	Fluorocarbon

**Highlight** represents Global Core product. More detailed information is available in the Global Core Catalog, MSG15-3504, available online at [www.parker.com/hvs/resources](http://www.parker.com/hvs/resources)

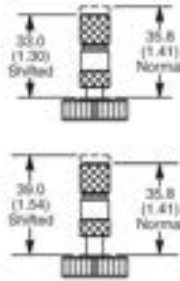


## SPOOL TYPE, 4-WAY, 3-POS. (*DSH125 series*)

(For more information, see details page [linked here](#))



Override  
Option



Coil(s) sold separately.  
Please see section CE for  
more information.

Model	Super Coil
DSH125	CA (5/8")

DS

H

12

Solenoid Valve / 4W/3P      Pressure      Size      Spool Type / Function      Override      Seal

Pressure	
Code	Max Pressure Rating
H	5000 PSI
1 - Tank (port 1) max pressure 3000 PSI.	

Size	
Code	Cavity Size
12	C12-4L (15 GPM)

Spool Function	
Code	Function
52	
54	
57	
59	

Override	
Code	Option
Omit	None
DN	Latch Operated

Seal	
Code	Material
N	Nitrile
V	Fluorocarbon

# Proportional Valves

## PRESSURE RELIEVING (AP0\* series)

(For more information, see details page [linked here](#))



**AP**

Proportional  
Valve /  
Relieving

Size

Function

Pressure  
Setting

Seal

Variation

Coil(s) sold separately. Please see section CE for more information.

Size	
Code	Cavity
02B2	C08-2 (5000 PSI)
04G2	C10-2 (5000 PSI)

Function		
Code	Function	
YP	Increase Pressure / Increase Current	
YR	Decrease Pressure / Increase Current	

Model	Super Coil
AP02B2YP	CC (1/2")
AP02B2YR	CA (5/8")
AP04G2*	CC (1/2")

Pressure Setting					
AP02B2				AP04G2	
YP		YR		YP and YR	
Code	Setting	Code	Setting	Code	Setting
07C	1000 PSI (1.4 GPM)	07A	1000 PSI (1.4 GPM)	10C	1000 PSI (25 GPM)
14C	2000 PSI (0.9 GPM)	14A	2000 PSI (0.9 GPM)	21C	3000 PSI (25 GPM)
21C	3000 PSI (0.8 GPM)	21A	3000 PSI (0.8 GPM)	35C	5000 PSI (25 GPM)
35C	5000 PSI (.35 GPM)	35A	5000 PSI (.35 GPM)		

Seal	
Code	Material
Omit <sup>1</sup>	"D"-Ring
N	Nitrile
V	Fluorocarbon
1 - Size 02B2 only	
<b>"D"-Ring for C08 cavity size only!</b>	

Variation	
Code	Option
Omit <sup>1</sup>	Standard
L <sup>2</sup>	Low
1 - AP02B2YP and AP04G2* only	
2 - AP02B2YR only	

**Highlight** represents Global Core product. More detailed information is available in the Global Core Catalog, MSG15-3504, available online at [www.parker.com/hvs/resources](http://www.parker.com/hvs/resources)

# Proportional Valves

## PRESSURE REDUCING/RELIEVING (*EPR\*\*\* series*) (For more information, see details page [linked here](#))

**EPR**Proportional  
Valve /  
Reducing/  
Relieving

Size



Function

Pressure  
Range

Seal

Coil(s) sold separately. Please see section CE for more information.

Model	Super Coil
EPR083*	SW7L (1/2" Short)
EPR111*	CC (1/2")

Size / Function			
Code	Cavity Size	Function	
083R	C08-3L (6 GPM, 5000 PSI)	Pilot Operated, Increasing Current/Increasing Pressure	
111C	C10-3L (10 GPM, 5000 PSI)	Pilot Operated, Increasing Current/Increasing Pressure	

Pressure Range	
Code	Cavity Size
02 <sup>1</sup>	200 PSI
03 <sup>1</sup>	300 PSI
05 <sup>1</sup>	500 PSI
10	1000 PSI
20	2000 PSI
30	3000 PSI
40	4000 PSI
<sup>1</sup> - Size 111C only	

Seal	
Code	Material
Omit	"D"-Ring
N	Nitrile
V	Fluorocarbon

**Highlight** represents Global Core product. More detailed information is available in the Global Core Catalog, MSG15-3504, available online at [www.parker.com/hvs/resources](http://www.parker.com/hvs/resources)

# Proportional Valves

## FLOW CONTROL, POPPET, 2-WAY (*FAP\*\*\* series*)

(For more information, see details page [linked here](#))


**FAP**

Flow Control  
/ 2W  
Poppet



Size



Function



Flow Option  
(**FAP101C**  
Only)



Override  
(**FAP101C**  
Only)



Seal

Coil(s) sold separately.  
Please see section CE  
for more information.

Model	Super Coil
FAP***	CA (5/8")

Size	
Code	Cavity Size
081	C08-2 (3000 PSI) 7 GPM (N.C.) 10.5 GPM (N.O.)
101	C10-2 (3000 PSI) 10.5 GPM (N.C.) 14.5 GPM (N.O.)
121	C12-2F (3000 PSI) 21.5 GPM (N.C.) 26 GPM (N.O.)
161	C16-2 (3000 PSI) 28 GPM (N.C.) 31 GPM (N.O.)

Function		
Code	Function	
C	Normally Closed	
N	Normally Open	

Seal	
Code	Material
Omit <sup>1</sup>	"D"-Ring, Nitrile
N <sup>2</sup>	Nitrile
V	Fluorocarbon
1 - Size 081, 101 - "D"-Ring Size 121, 161 - Nitrile 2 - Size 081, 101 only	
<b>"D"-Ring for C08 and C10 cavity sizes only!</b>	

Flow Option (FAP101C only)	
Code	Option
Omit	Standard (10.5 GPM)
H <sup>1</sup>	High (13 GPM)
1 - FAP101C only	

Override (FAP101C only)	
Code	Option
Omit	None
M <sup>1</sup>	Screw Type
1 - Not for High Flow	

# Proportional Valves

## FLOW CONTROL, SPOOL, 2-WAY (DF\*\*\*series)

(For more information, see details page [linked here](#))


**DF**

Flow  
Control  
/ 2W  
Spool

Size

Function

Flow  
Rate

Override

Seal

Coil(s) sold separately.  
Please see section CE  
for more information.

Model	DS Coil
DS163	1" DS

Size	
Code	Cavity Size
122	C12-2 (3000 PSI)

Function		
Code	Function	
C	Normally Closed	
N	Normally Open	

Flow Rate	
Code	Flow Rate
14	14 GPM

Override	
Code	Option
Omit	Push Type w/Extended Rod

Seal	
Code	Material
Omit	Nitrile
V	Fluorocarbon

# Proportional Valves

## FLOW CONTROL, SPOOL, 2-WAY(JP\*\*\* series)

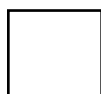
(For more information, see details page [linked here](#))



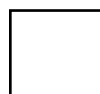
Flow Control  
/ 2W  
Spool



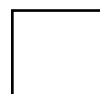
Size



Function



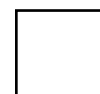
Flow Rate



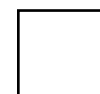
Override



Screen



Seal



Flow Variation

Coil(s) sold separately.  
Please see section CE  
for more information.

Model	Super Coil
JP02*	CC (1/2")
JP04*	CA (5/8")

Size	
Code	Cavity Size
02	C08-2 (3000 PSI)
04	3X (3000 PSI)

Function		
Code	Function	
C	Normally Closed	
P	Normally Open	

Flow Rate			
JP02*		JP04*	
Code	Flow Rate	Code	Flow Rate
20	up to 2 GPM	21	up to 9.5 GPM
21	up to 6 GPM		

Override	
Code	Option
0	None
5	Infinite Control

Screen	
Code	Option
0	None
1	Screen (on port 2)

Seal	
Code	Material
N	Nitrile
V	Fluorocarbon

Flow Variation	
Code	Variation
Omit	Standard (+/- 20%)
L	Low Variation (+/- 7%)

**Highlight** represents Global Core product. More detailed information is available in the Global Core Catalog, MSG15-3504, available online at [www.parker.com/hvs/resources](http://www.parker.com/hvs/resources)

# Proportional Valves

## FLOW CONTROL, SPOOL, 3-WAY (JP04C31 series)

(For more information, see details page [linked here](#))



<b>JP</b>	<b>04</b>	<b>C</b>	<b>31</b>		<b>0</b>		
Flow Control / 3W Spool	Size	Function	Flow Rate	Override	Screen	Seal	Flow Variation

Coil(s) sold separately. Please see section CE for more information.

Model	Super Coil
JP04C31	CA (5/8")

Size	
Code	Cavity Size
04	4C (3000 PSI)

Function	
Code	Function
C	Normally Closed

Flow Rate	
Code	Override
31	up to 8 GPM

Override	
Code	Option
0	None
5	Infinite Control

Screen	
Code	Option
0	None

Seal	
Code	Material
N	Nitrile
V	Fluorocarbon

Flow Variation	
Code	Variation
Omit	Standard (+/- 20%)
L	Low Variation (+/- 7%)

**Highlight** represents Global Core product. More detailed information is available in the Global Core Catalog, MSG15-3504, available online at [www.parker.com/hvs/resources](http://www.parker.com/hvs/resources)

# Proportional Valves

## DIRECTIONAL CONTROL VALVES (GP025\* series)

(For more information, see details page [linked here](#))


**GP**

Directional  
Control /  
4W/3P

**02**

Size

Spool  
Type

Override

Seal

Coil(s) sold separately.  
Please see section CE  
for more information.

Model	Super Coil
GP025*	CC (1/2")

Size	
Code	Cavity Size
02	C08-4 (5000 PSI) <sup>1</sup>
<sup>1</sup> - Max Tank (port 1) pressure 3000 PSI	

Override	
Code	Option
Omit	None
1	Non-Detented
2	Detented

Seal	
Code	Material
N	Nitrile
V	Fluorocarbon

**Highlight** represents Global Core product. More detailed information is available in the Global Core Catalog, MSG15-3504, available online at [www.parker.com/hvs/resources](http://www.parker.com/hvs/resources)

Spool Function					
Code	Rated Flow		Super Coil Type		Function
	“A” Solenoid Push Push (3-2, 4-1)	“B” Solenoid Pull Pull (3-4, 2-1)	Push	Pull	
51L (Low Flow)	1.4 GPM	1.4 GPM	CCP (High Watt)	CCP (High Watt)	
	0.9 GPM	0.9 GPM	CCS (Low Watt)	CCS (Low Watt)	
51 (Standard)	3.5 GPM	4.5 GPM	CCP (High Watt)	CCP (High Watt)	
	3.0 GPM	4.0 GPM	CCS (Low Watt)	CCS (Low Watt)	
52 (High Flow)	5.5 GPM	4.5 GPM	CCP (High Watt)	CCP (High Watt)	
	4.5 GPM	3.5 GPM	CCS (Low Watt)	CCS (Low Watt)	
53L (Low Flow)	1.4 GPM	1.4 GPM	CCP (High Watt)	CCP (High Watt)	
	1.0 GPM	1.0 GPM	CCS (Low Watt)	CCS (Low Watt)	
53 (Standard)	3.8 GPM	4.0 GPM	CCP (High Watt)	CCP (High Watt)	
	2.5 GPM	2.7 GPM	CCS (Low Watt)	CCS (Low Watt)	
54 (High Flow)	4.5 GPM	5.0 GPM	CCP (High Watt)	CCP (High Watt)	
	4.0 GPM	4.0 GPM	CCS (Low Watt)	CCS (Low Watt)	



# Proportional Valves

## DIRECTIONAL CONTROL VALVES (*DSP105 series*)

**DSP**Directional  
Control /  
4W/3P**105**

Size

Spool  
Function

Override



Seal

(For more information, see  
details page [linked here](#))

Coil(s) sold separately.  
Please see section CE  
for more information.

Model	Super Coil
DSP105	CA (5/8")

Size	
Code	Cavity Size
10	C10-4 (8.5 GPM, 5000 PSI)
1 - Max Tank (port 1) pressure 3000 PSI	

**Highlight** represents Global Core  
product More detailed information is  
available in the Global Core Catalog,  
MSG15-3504, available online at  
[www.parker.com/hvs/resources](http://www.parker.com/hvs/resources)

Spool Function	
Code	Function
C1	
C4	

Override	
Code	Option
Omit	None
M	Push/Pull

Seal	
Code	Material
Omit	"D"-Ring
N	Nitrile
V	Fluorocarbon

## SUPER COIL, 1/2" and 5/8" (CC\* and CA\* series)

(For more information, see details page linked here:  
[CC Series](#) [CA Series](#))



Super  
Coil /  
Size



Wattage



Voltage



Termination

Voltage	
Code	Voltage
012	12 VDC
024	24 VDC
115	115 VAC

Size	
Code	I.D. Size
CC	1/2"
CA	5/8"

Wattage			
Code	Wattage	Watt (DC coil)	Watt (AC coil)
S	Standard	14w (CC)	16w (CC)
		18w (CA)	18w (CA)
P	Puissant	19w (CC)	19w (CC)
		28w (CA)	28w (CA)

Termination	
Code	Termination
D <sup>3</sup>	DIN 43650
H <sup>1</sup>	Integral Deutsch
HSN <sup>1</sup>	Integral Deutsch w/Anti-Vibration ring
HSZN <sup>1</sup>	Integral Deutsch w/Anti-Vibration ring and Zener Diode
L <sup>1</sup>	Double Lead Wire
S <sup>1</sup>	Double Spade
C <sup>2</sup>	Double Lead Wire with Conduit Connector
1 - 012 or 024 voltage (DC) only. 2 - 115 voltage (AC) only. 3 - Supplied without connector	

**Highlight** represents Global Core product. More detailed information is available in the Global Core Catalog, MSG15-3504, available online at [www.parker.com/hvs/resources](http://www.parker.com/hvs/resources)

## SHORT COIL, 1/2" (SW7L\* series for EPR083R)

(For more information, see details page [linked here](#))


**SW7**

Super  
Coil /  
Size

**L**

Wattage

Termination

Voltage

**Highlight** represents Global Core product. More detailed information is available in the Global Core Catalog, MSG15-3504, available online at [www.parker.com/hvs/resources](http://www.parker.com/hvs/resources)

Size	
Code	I.D. Size
SW7L	1/2" Short

Wattage	
Code	Wattage
L	Standard - 14w

Termination	
Code	Termination
H	Integral Deutsch
W	Double Lead Wire

Voltage	
Code	Voltage
012	12 VDC
024	24 VDC

## DS COIL, 1" (851\* series)

(For more information, see details page [linked here](#))


**851**

DS Coil  
/ Size

Termination  
/ Wattage

Voltage

Size	
Code	I.D. Size
851	1"

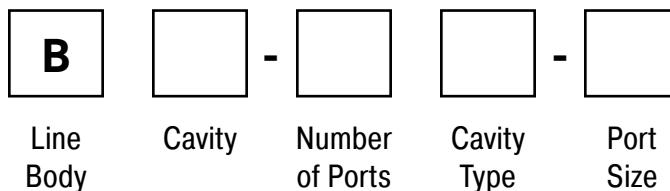
Termination		Wattage
Code	Termination	
060 <sup>1</sup>	Double Spade	42w
062 <sup>1</sup>	Double Lead	42w
057 <sup>2</sup>	Double Lead w/Conduit	55w
058 <sup>3</sup>	DIN 43650	42w (DC) 55w (AC)

1 - 012VDC or 024VDC voltage (DC) only.  
2 - 120VAC voltage (AC) only.  
3 - Supplied without connector

Voltage
Code
012VDC
024VDC
120VAC

## STANDARD LINE BODIES (*B\*\*-\* series*)

(For more information, see details page [linked here](#))



Cavity	
Code	Cavity
04	C04
08	C08
10	C10
12	C12
16	C16
20	C20

Number of Ports	
Code	
2	
3	
4 <sup>1</sup>	

1 - Not available with cavity 04 and 20.

Cavity Type	
Code	Type
Omit	Standard
F <sup>1</sup>	FPS
L <sup>2</sup>	Long
S <sup>3</sup>	Short

1 - Cavity 12, 2 ports, for FAP121 series valve only.

2 - Cavity 12, 4 ports, for DSH125 series valve only.

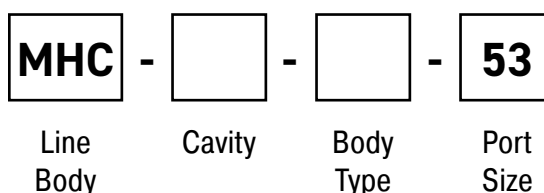
3 - Cavity 10, 16, and 20, 3 ports, for Logic Element series valves only.

Port Size	
Code	Size
4T	SAE-4 (Steel) - Cavity 04 only
6T	SAE-6 (Steel) - Cavity 08 only
8T	SAE-8 (Steel) - Cavity 10 only
12T	SAE-12 (Steel) - Cavity 12 only
16T	SAE-16 (Steel) - Cavity 16 only
20T	SAE-20 (Steel) - Cavity 20 only

**Highlight** represents Global Core product. More detailed information is available in the Global Core Catalog, MSG15-3504, available online at [www.parker.com/hvs/resources](http://www.parker.com/hvs/resources)

## COUNTERBALANCE BODIES (*MHC-\* series*)

(For more information, see details page [linked here](#))



Cavity	
Code	Cavity
010	CDD-1010
022	CDD-1036

Body Type	
Code	Type
A	Single
D	Double

Port Size	
Code	Size
53	SAE-10 through port SAE-6 pilot port

**Highlight** represents Global Core product. More detailed information is available in the Global Core Catalog, MSG15-3504, available online at [www.parker.com/hvs/resources](http://www.parker.com/hvs/resources)

## SPECIAL LINE BODIES (*LB10\* series*)

(For more information, see details page [linked here](#))


**LB10**

Line  
Body



Cavity /  
Ports



Material  
(Steel)

**Highlight** represents Global Core product. More detailed information is available in the Global Core Catalog, MSG15-3504, available online at [www.parker.com/hvs/resources](http://www.parker.com/hvs/resources)

Cavity				Cavity			
Code	Cavity	Number Ports	Port Size	Code	Cavity	Number Ports	Port Size
066	3A	3	SAE-16	318	53-1	3	SAE-8 (main) SAE-4 (aux)
069	3C	3	SAE-16 (main) SAE-4 (aux)	321	5A	5	SAE-12 (main) SAE-4 (aux)
078	3M	3	SAE-16 (main) SAE-4 (aux)	436	ES10436	2	SAE-6
089	3K	3	SAE-16 (main) SAE-4 (aux)	543	2R	2	SAE-8
105	3M	3	SAE-16 (Dual Cavity)	553	3X	3	SAE-8
212	2C	2	SAE-16	562	4C	4	SAE-8
220	2U	2	SAE-16	591	54-1	3	SAE-4
234	3C	3	SAE-12 (Dual Cavity)	795	CAV0W-2	2	SAE-4
253	68-1	3	SAE-20 (main) SAE-6 (aux)	815	CAVSW-3	3	SAE-4
317	100-1	5	SAE-20 (main) SAE-6 (aux)	825	CAVT11A	3	SAE-8 (main) SAE-4 (aux)

## CARTPAK BODIES (*BD03\* series*)

(For more information, see details page [linked here](#))



**BD03** -   - **S**

Cartpak  
Body

Function  
/ Cavity

Material  
(Steel)

Function / Cavity					Function / Cavity				
Code	Function	Schematic	Cavity	Mounting Size	Code	Function	Schematic	Cavity	Mounting Size
ABN	A and B Port Interrupt		C10-2 (Dual Cavity)	D03	PN	P Port Interrupt		C10-2 (Single Cavity)	D03
ABT	A and B Ports to Tank		C10-2 (Dual Cavity)	D03	PN2	P Port Interrupt		C10-2 (Single Cavity)	D03
ABX	A and B Crossover		C10-2 (Dual Cavity)	D03	PNR	P Port Interrupt, Reducing		C10-3 (Single Cavity)	D03
ADB	A Port Drain to B		C10-3 (Single Cavity)	D03	PNS	P Port Interrupt, Sequence		C10-3 (Single Cavity)	D03
BDA	B Port Drain to A		C10-3 (Single Cavity)	D03	POC	Dual P.O. Check		C10-2 (Dual Cavity)	D03
DDX	A and B Ports Drain to Crossover		C10-3 (Dual Cavity)	D03	PT	P to T		C10-2 (Single Cavity)	D03



Parker Hannifin Corporation  
**Hydraulic Valve Systems Division**  
520 Ternes Avenue  
Elyria, Oh. 44036-4026  
phone 440 366 5100  
email [HCS.Support@support.parker.com](mailto:HCS.Support@support.parker.com)  
[www.parker.com/hvs](http://www.parker.com/hvs)

© 2025 Parker Hannifin Corporation

